

COLLECTION
2019 - 2020

LAMINATE




QUICK-STEP®
FLOOR DESIGNERS

Laminate: an innovative all-rounder

When Quick-Step launched in 1990, the brand immediately put laminate flooring on the map. While we have since expanded in wood and vinyl flooring, we have continued to improve our laminate category with even more life-like designs, structures and performance. In 2019, this process has led us to our brand new Signature collection.

Enter the world of Quick•Step®

The history of Quick-Step is laden with tales of daring entrepreneurship and innovation. Thanks to that rich history, we're not only able to present you with some of the most beautiful flooring on the market, but the strongest as well. We pride ourselves on our dedication to beauty and elegance that is built to last.

**"INNOVATION AND MODERNISATION
ARE PART OF THE QUICK-STEP DNA. WE'RE ALWAYS
LOOKING TO MAKE THINGS BETTER,
MORE BEAUTIFUL AND MORE EFFICIENT."**

BERNARD THIERS, CEO

We are confident that you'll find a Quick-Step floor to match your own unique vision, a floor that inspires you to get started on that renovation project, a floor that will help turn your house into the home you've always wanted – one plank at a time. And even more, you'll find a floor that will last a lifetime.

**IF FINDING THE MOST ENDURING AND ELEGANT
FLOOR IS YOUR GOAL, WE'RE HERE TO GUIDE YOU.**

From 1990 to 2019



1990

1990

Birth of the Quick-Step brand.

1997

Uniclic®, a revolutionary glueless click system is introduced.

2001

Launch of matching, true-to-nature structures and the V-bevel.

2004

Quick-Step presents the patina technology: a white oiled surface treatment.



2009

Scratch Guard technology increases scratch resistance up to 10 times (compared to regular laminate floors).

2019

A gamechanger in laminate: Signature. A collection marked by refinement.

[Discover more on p. 10](#)

2007

Quick-Step is the first to bring laminate into the bathroom.

2014

Introduction of Impressive (Ultra): water-resistant laminate. Structure and design are pressed into the bevel for a more realistic look.

Get inspired

9

Quick-Step's Signature collection: redefining the essence of beauty

10

Quick-Step's five trends to watch

16

Discover

19

Bevels create rhythm

20

Resisting everything, even water

22

Choose your Laminate floor

24

Collection

31

| | | |
|-----------------------------|-----|----|
| Signature | NEW | 32 |
| Majestic | | 34 |
| Largo | | 36 |
| Impressive/Impressive Ultra | | 38 |
| Eligna | | 41 |
| Elite | | 44 |
| Classic | | 46 |
| Creo | | 48 |
| Impressive Patterns | NEW | 50 |
| Arte | | 52 |
| Exquisa | | 54 |

Installation

57

| | |
|--------------------------------------|----|
| Install your floor without hassle | 58 |
| Easy installation | 62 |
| Finish in style | 64 |
| Worry-free maintenance | 72 |
| Setting the stage for sustainability | 74 |





Quick-Step's Signature collection: redefining the essence of beauty

"It's always been our goal to create the most beautiful laminate floors. Signature, our latest collection, is marked by unprecedented levels of refinement."

KATRIEN DE VLIAGER, DESIGN MANAGER & LAURENT MEERSSEMAN, R&D DIRECTOR AT QUICK-STEP



THE NEXT GENERATION OF LAMINATE FLOORING

Laurent: "Laminate flooring is part of Quick-Step's DNA. Since the very beginning, our goal has been to create laminate that offers all the advantages of synthetic flooring, but that is undistinguishable from real wood or stone in look and feel. With our new Signature collection, we took Laminate to the next level: we went further than ever before to get all the details right."

Katrien: "In terms of design, our new Signature collection is inspired by nature and pure influences, with white and light colours dominating the palette. We were also inspired by the re-emergence of warm naturals and exotic colours from Africa and Latin America. The common thread present in all these floors is an eye for detail and a sense of craftsmanship."

Discover the interior trends gathered by the R&D team on p. 16-17

PERFECT IMPERFECTIONS... INSPIRED BY NATURE

Laurent: "Quick-Step is one of the few flooring brands worldwide with an in-house design team. Taking inspiration from architecture, art, fashion and real life, our expert designers embark on quests to obtain 'perfect originals': pieces of wood or stone that have the right look and feel to serve as a prototype for a flooring board. In some cases, these originals are treated in-house with patina or wax to obtain a specific look."

"Next, we comprehensively scan the original piece of wood, including the design and colour, as well as the complete structure with its cracks, knots and flowers. The result is a huge, virtual 3D model of each piece, which is then refined by the designers. By getting rid of details that are too conspicuous, they craft a perfectly balanced design."

"EACH DESIGN IS THE RESULT OF
CAREFUL CRAFTSMANSHIP FOCUSED ON
FINDING THE RIGHT BALANCE."

LAURENT MEERSSEMAN



Katrien De Vlieger, Design Manager & Laurent Meersseman, R&D Director at Quick-Step

NEW

Signature: a collection marked by refinement

A NEW STANDARD IN LAMINATE FLOORING

"The Signature collection reflects R&D's commitment to push the boundaries and set a new standard in laminate flooring. What sets Quick-Step apart from other flooring manufacturers is the close collaboration between the design and engineering teams: the first focuses on creating the most beautiful, timeless floors; the second brings the design to life. The new Quick-Step Signature range consists of 18 unique flooring designs marked by unprecedented levels of refinement. Let's take a closer look at a few highlights."



SIGNATURE

REFINED IN EVERY DETAIL



SIG4763

“WE WENT FURTHER
THAN EVER BEFORE TO GET
ALL THE DETAILS RIGHT”

LAURENT MEERSSEMAN

BRUSHED OAK: A SHOWPIECE OF STRUCTURE

Katrien: “Brushed oak fits in perfectly with different interior styles. This floor is based on a brushed European oak sprinkled with a few subtle cracks and knots. The subtle brushed effect really brings out the natural imperfections and gives each plank a soft, rustic character.”

Laurent: “The brushed effect really highlights the oak’s structure and makes the floor not only look but also feel like real wood. To accomplish this, we developed a new technology to create 64 different depths, on the surface as well as in the bevel – a feature that’s unseen in laminate flooring. In addition, the way the light hits these variations in depths creates a subtle difference in gloss levels. The attention to detail is quite astounding and demanded our engineering team to go above and beyond what’s possible.”



ADD DEPTH TO YOUR INTERIOR

The astoundingly detailed structure consists of 64 different depths, on the surface as well as in the bevel. It makes the floor look and feel exactly like real wood.



CRACKED OAK NATURAL: A NEW TAKE ON THE 'RECLAIMED' LOOK

Katrien: "The originals of our Cracked oak design are planks we found in old train wagons. We sanded them until the wood beneath became visible. As a result, the surface is rather clean but with dark knots and cracks – like splits in the wood – that are very pronounced."

Laurent: "Here, the challenge was to harmonise the smooth, sanded surface with the sharp edges of the cracks. The structure has to be pressed very precisely to obtain the exceptionally sharp edges along the cracks."



REALISTIC CRACKS

The realistic, sharp edges along the cracks are the result of an innovative and very precise pressing technology.

SOFT PATINA OAK: AN ADDED LAYER OF ZEN

Katrien: "Due to its versatility, oak remains as popular as ever. By treating the original planks with a robust patina, imperfections have been softened to create a romantic zen look."

Laurent: "Giving Soft patina oak its authentic, zen look wasn't easy. In fact, we had to completely redevelop our oil patina print technology to ensure that the white oil perfectly highlights the details of the décor and complements the structure of the plank. We had to test several different approaches before we ended up with the right one."

"The subtle and intended imperfections are where this floor really shines. If you look closely, you'll notice touches of matt finish, which give the floor a used look. In addition, the bevel looks distressed and splintered – just like a real wooden floor does."

Discover the complete Signature collection on p. 32-33

**PERFECT PATINA EFFECT**

The oil patina print technology ensures that the white oil perfectly complements the structure of the plank.

Quick-Step's five trends to watch

"To dream up new and authentic floors, we keep a close eye on the latest trends in architecture and design. Discover the most remarkable insights we've gathered."

KATRIEN DE VLIAGER, DESIGN MANAGER AT QUICK-STEP

PATTERNS

Patterns are making a clear comeback: on wallpaper, fabrics,... but also on your floor. A nostalgic herringbone pattern will turn any room into an eye-catcher.

[Impressive Patterns - Chevron oak medium - IPA4160](#)



CONTRAST

Radiating warmth and softness, pastels are here to stay. Add some power with a contrasting colour, like black or combine them with a brighter variation of the same hue. It adds a subtle colour play and originality.

[Signature - Painted oak black - SIG4755](#)



WORLD TRAVELLER

The world is our playground – and our home reflects that notion. This interior is inspired by cultures from around the globe. Marked by warm colours and earthy hues of red, orange, terracotta, green plants and lots of textures. The influence of different journeys is felt throughout.

Signature - Cracked oak natural - SIG4767

IMPERFECT ZEN

This trend is all about subtle rough structures and natural elements. Asymmetry, rawness, simplicity and natural imperfection of the materials create a pure and balanced whole. Go for a mix of untreated wood and other tactile materials in combination with a light colour palette.

Signature - Patina oak grey - SIG4752



RUSTIC CHIC

Deep-grained wood, leather, metal and marble create a rustic chic atmosphere, not only in look, but also in feel. Marked by an unprecedented level of realism, the texture and structure of the floors breathe authenticity. The result is a space where luxurious, classical and rustic elements meet.

Signature - Waxed oak brown - SIG4756



Majestic

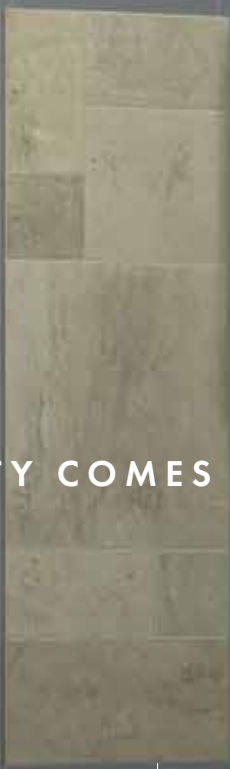
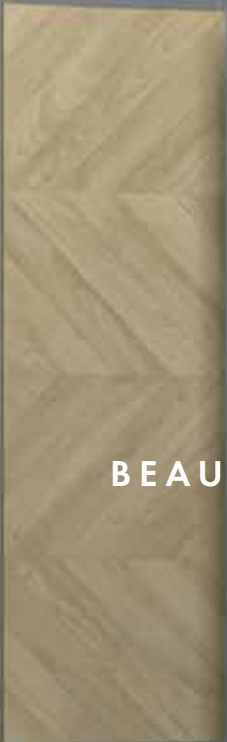
Largo

Signature

Impressive (Ultra)

Eligna

Elite



BEAUTY COMES IN MANY SIZES

Classic

Creo

Impressive Patterns

Exquisa

Arte



Bevels create rhythm

Each Laminate floor has its own story and unique look and feel. Quick-Step's design team carefully selects the structure, treatment, finishing and bevel to create the overall character. In this way, bevels determine the floor's rhythm and atmosphere.



GENUINE BEVEL

The bevel fits the character of the floor perfectly.
The colour, design and structure of the plank are visible throughout the bevel.



CLM1405



IMPRESSION BEVEL

An effect that gives you the impression of bevels and gives the floor the look of real planks.



MICRO BEVEL

Fine, micro-bevelled edges clearly outline the planks.



LPU1660

Resisting everything, even water



Meet the latest generation of laminate floors. Floors that don't just look exceptionally stylish and natural, but that can also take the hustle and bustle of daily life. And above all, they also have a 100% waterproof surface.

DISCOVER OUR COMPLETE COLLECTION OF WATERPROOF SURFACE FLOORS ON P. 24-29





SPILLED A DRINK? DID THE KIDS PLAY WITH WATER?

Don't panic: the liquid won't be absorbed by the floor and you can mop it up immediately. Six of our Laminate collections – Signature, Majestic, Impressive (Ultra), Eligna, Classic and Impressive Patterns – are equipped with a water-repellent HydroSeal coating. Cleaning is easier than ever thanks to these floors' water-resistant properties. A completely sealed surface means that bacteria, dirt and even liquids don't stand a chance. They can simply be wiped off with a damp cloth, leaving a clean, hygienic surface. Thanks to these features, Laminate is the ideal floor for your kitchen and hallway. It also makes it the perfect choice for your bathroom. On top of that, Quick-Step offers a warranty of up to 25-years on your new Laminate floor, guaranteeing many years of worry-free pleasure in your home.

Learn more about the water-resistant properties of our floors on www.quick-step.com



Find everything you need for a water-resistant finish of your floor on p. 71



Competitor's laminate



Quick-Step Laminate

Thanks to its unique water-resistant properties, Quick-Step Laminate doesn't absorb any moisture. As a result, the bevel remains as smooth as ever, even after cleaning with large amounts of water.

Choose your Laminate floor



NEW

Signature

The most refined and water-resistant laminate floor. The unprecedented attention to detail makes your laminate indistinguishable from real wood.

Dimensions:

138 x 21.2 cm



Thickness:

9 mm

Pack:

7 planks = 2.048 m²

Bevels:

4 genuine bevels 

Warranty:

Domestic 25y / Commercial 5y / Wet 10y

Class:

32

Installation:



Waterproof surface:



Majestic

The extra-large format, natural look and water-resistant technology make this floor a perfect choice to create a truly regal interior with a spacious appearance.

Dimensions:

205 x 24 cm



Thickness:

9.5 mm

Pack:

6 planks = 2.952m²

Bevels:

4 genuine bevels 

Warranty:

Domestic 25y / Commercial 5y / Wet 10y

Class:

32

Installation:



Waterproof surface:





SIG4760

Largo

With their extraordinary length of more than two-metres, these planks exude class and quality. The micro bevel adds more depth to your interior.

Dimensions:

205 x 20.5 cm

Thickness:

9.5 mm

Pack:

6 planks = 2.522 m²

Bevels:

4 micro bevels 

Warranty:

Domestic 25y / Commercial 5y

Class:

32

Installation:



Impressive

A collection of medium-sized and water-resistant laminate floors that look and feel exceptionally natural.

Dimensions:

138 x 19 cm

Thickness:

8 mm

Pack:

7 planks = 1.835 m²

Bevels:

4 genuine bevels 

Warranty:

Domestic 25y / Commercial 5y / Wet 10y

Class:

32

Installation:



Waterproof surface:



Impressive Ultra

Besides the impressive natural look and water-resistant features, Impressive Ultra adds an extra layer of protection that will make your floor last even longer. Ideal for rooms under intensive use.

Dimensions:

138 x 19 cm

Thickness:

12 mm

Pack:

5 planks = 1.311 m²

Bevels:

4 genuine bevels 

Warranty:

Domestic 25y / Commercial 10y / Wet 10y

Class:

33

Installation:



Waterproof surface:





EL3579

Eligna

Elegant, water-resistant floors with an excellent balance between length and width. The absence of bevels gives your interior a streamlined appearance.

Dimensions:

138 x 15.6 cm



Thickness:

8 mm

Pack:

8 planks = 1.722 m²

Bevels:

0

Warranty:

Domestic 25y / Commercial 5y / Wet 5y

Class:

32

Installation:



Waterproof surface:



Elite

Elegant planks with a subtle micro bevel to add more depth to your interior.

Dimensions:

138 x 15.6 cm



Thickness:

8 mm

Pack:

8 planks = 1.722 m²

Bevels:

4 micro bevels 

Warranty:

Domestic 25y / Commercial 5y

Class:

32

Installation:





Classic

Water-resistant Classic floors offer a balanced combination of colours and styles, blended with a natural look and feel.

Dimensions:

120 x 19 cm



Thickness:

8 mm

Pack:

7 planks = 1.596 m²

Bevels:

0 or 4 impression bevels 

Warranty:

Domestic 25y / Commercial 5y / Wet 5y

Class:

32

Installation:



Waterproof surface:



Creo

The 7 mm standard-sized and bevel-less planks provide a streamlined appearance.

Dimensions:

120 x 19 cm



Thickness:

7 mm

Pack:

8 planks = 1.824 m²

Bevels:

0

Warranty:

Domestic 20y

Class:

32

Installation:





EXQ 1556

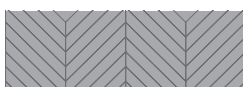
NEW

Impressive Patterns

Give free rein to your imagination with these water-resistant patterns.

Dimensions:

120 x 39.6 cm



Thickness:

8 mm

Pack:

4 planks = 1.901 m²

Bevels:

2 or 4 genuine bevels 

Warranty:

Domestic 25y / Commercial 5y / Wet 5y

Class:

32

Installation:

Waterproof surface:



Arte

Large laminate tiles with subtle V-grooves. Combine the durability of an original tile floor with the practical benefits of laminate.

Dimensions:

62.4 x 62.4 cm



Thickness:

9.5 mm

Pack:

4 planks = 1.558 m²

Bevels:

4 micro bevels 

Warranty:

Domestic 25y / Commercial 5y

Class:

32

Installation:



CLASS 32

For residential use. Normal, daily use in ordinary living spaces.

CLASS 33

For commercial use and high traffic residential use. Extra wear-resistant floors for areas with higher usage.

WARRANTY

For more information about the domestic, commercial or wet warranty of the floors go to www.quick-step.com

Exquisa

An innovative floor with a tactile surface structure. The boards can consist of different tiles.

Dimensions:

122.4 x 40.8 cm

Thickness:

8 mm

Pack:

2 planks = 0.999 m²

Bevels:

4 micro bevels  or 4 genuine bevels 

Warranty:

Domestic 25y / Commercial 5y

Class:

32

Installation:



Three ways to your perfect floor

ENTER THE FLOOREXPLORER

With so many flooring options to choose from, making the right decision can be a challenge. With our online FloorExplorer we'll guide you to a selection of floors that match your personal needs and style in just a few steps. Give it a try!

ORDER FLOOR SAMPLES ONLINE

Want to see what the floor of your choice would look like in reality, as well as how it matches with your furniture, wall colour,...? Order a floor sample on our website and see for yourself.

ORDER YOUR ENTIRE FLOOR ONLINE

Convinced? Visit your nearest Quick-Step dealer or order directly from our webstore. Online payment is super secure, and delivery is free for orders above £300. You can also choose to pick up your order at your local dealer.

www.quick-step.com





A bathroom interior featuring a dark wood vanity with a white sink, a black medicine cabinet, and a round wooden stool. The vanity has ornate brass handles and a decorative brass piece on the front. The medicine cabinet is black with glass doors and contains various toiletries. The wall is a light, textured color, and the floor is a light, textured material. A round wooden stool is on the left side of the frame.

LAMINATE COLLECTION 2019

NEW Signature

SIZE

138 x 21.2 cm x 9 mm



The most refined and water-resistant laminate floor. The unprecedented attention to detail makes your laminate indistinguishable from real wood.

Read the complete story on p.10

4 GENUINE BEVELS 



PAINTED OAK WHITE

SIG4753



WHITE PREMIUM OAK

SIG4757



SOFT PATINA OAK

SIG4748



BRUSHED OAK GREY

SIG4765



PATINA OAK GREY

SIG4752



PAINTED OAK ROSE

SIG4754

**BEIGE VARNISHED OAK**

SIG4750

**BRUSHED OAK BEIGE**

SIG4764

**BRUSHED OAK NATURAL**

SIG4763

**BRUSHED OAK WARM NATURAL**

SIG4762

**NATURAL VARNISHED OAK**

SIG4749

**CRACKED OAK NATURAL**

SIG4767

**PATINA OAK BROWN**

SIG4751

**BRUSHED OAK BROWN**

SIG4766

**CHIC WALNUT**

SIG4761

**MERBAU**

SIG4760

**WAXED OAK BROWN**

SIG4756

**PAINTED OAK BLACK**

SIG4755

Majestic

SIZE

205 x 24 cm x 9.5 mm



The extra-large format, natural look and water-resistant technology make this floor a perfect choice to create a truly regal interior with a spacious appearance.

4 GENUINE LEVELS 



VALLEY OAK LIGHT BEIGE

MJ3554



DESERT OAK LIGHT NATURAL

MJ3550



WOODLAND OAK BEIGE

MJ3545



WOODLAND OAK NATURAL

MJ3546



DESERT OAK WARM
NATURAL

MJ3551



VALLEY OAK LIGHT BROWN
NATURAL

MJ3555



Order your floor samples and floor online
at www.quick-step.com



WOODLAND OAK LIGHT GREY

MJ3547



DESERT OAK BRUSHED GREY

MJ3552



WOODLAND OAK BROWN

MJ3548



DESERT OAK BRUSHED DARK BROWN

MJ3553

Largo

SIZE

205 x 20.5 cm x 9.5 mm

With their extraordinary length of more than two-metres, these planks exude class and quality. The micro bevel adds more depth to your interior.

4 MICRO BEVELS ~



PACIFIC OAK

LPU1507

Subtle prints on this floor



LIGHT RUSTIC OAK

LPU1396



LONG ISLAND OAK LIGHT

LPU1660



DOMINICANO OAK GREY

LPU1663



AUTHENTIC OAK

LPU1505



DOMINICANO OAK NATURAL

LPU1622



WHITE VINTAGE OAK

LPU3985



LONG ISLAND OAK NATURAL

LPU1661



WHITE VARNISHED OAK

LPU1283



CAMBRIDGE OAK NATURAL

LPU1662



NATURAL VARNISHED OAK

LPU1284



CAMBRIDGE OAK DARK

LPU1664



GREY VINTAGE OAK

LPU3986



NATURAL VARNISHED MERBAU

LPU3988



LPU1662

Impressive

Impressive Ultra

IMPRESSIVE

138 x 19 cm x 8 mm

IMPRESSIVE ULTRA

138 x 19 cm x 12 mm



A collection of medium-sized and water-resistant laminate floors that look and feel exceptionally natural. Impressive Ultra adds an extra layer of protection that will make your floor last longer, even under intensive use.

4 GENUINE BEVELS



WHITE PLANKS

IM1859

IMU1859



PATINA CLASSIC OAK LIGHT

IM3559

IMU3559



CONCRETE WOOD LIGHT GREY

IM1861

IMU1861



PATINA CLASSIC OAK GREY

IM3560

IMU3560



SOFT OAK LIGHT

IM1854

IMU1854



SAW CUT OAK GREY

IM1858

IMU1858



SOFT OAK GREY

IM3558 IMU3558



SAW CUT OAK BEIGE

IM1857 IMU1857



NATURAL PINE

IM1860 IMU1860



SANDBLASTED OAK NATURAL

IM1853 IMU1853



CLASSIC OAK BEIGE

IM1847 IMU1847



WHITE VARNISHED OAK

IM3105 IMU3105



SOFT OAK MEDIUM

IM1856 IMU1856



SOFT OAK NATURAL

IM1855 IMU1855



NATURAL VARNISHED OAK

IM3106 IMU3106



CLASSIC OAK NATURAL

IM1848 IMU1848



SOFT OAK LIGHT BROWN

IM3557 IMU3557



SCRAPED OAK GREY BROWN

IM1850

IMU1850



CLASSIC OAK BROWN

IM1849

IMU1849



BURNED PLANKS

IM1862

IMU1862



IMU1856

Eligna

SIZE

138 x 15.6 cm x 8 mm



Elegant, water-resistant floors with an excellent balance between length and width. The absence of bevels gives your interior a streamlined appearance.

0 BEVELS



WENGÉ PASSIONATA

EL1300



ESTATE OAK LIGHT GREY

EL3573



VENICE OAK LIGHT

EL3990



NEWCASTLE OAK GREY

EL3580



VENICE OAK GREY

EL3906



ESTATE OAK BEIGE

EL3574

O BEVELS



VENICE OAK BEIGE

EL3907



LIGHT GREY VARNISHED OAK

EL1304



WHITE VARNISHED OAK

EL915



VENICE OAK NATURAL

EL3908



RIVA OAK NATURAL

EL3578



NATURAL VARNISHED OAK

EL896



WHITE OAK LIGHT

EL1491



OLD OAK MATT OILED

EL312



RIVA OAK BROWN

EL3579



METALLIC CÉRUSÉ OAK GOLD

EL3466

Metallic effect



NEWCASTLE OAK BROWN

EL3582



EL3573



OILED WALNUT

EL1043



MERBAU

EL996



NEWCASTLE OAK DARK

EL3581

Elite

SIZE

138 x 15.6 cm x 8 mm

Elegant planks with a subtle micro bevel to add more depth to your interior.

4 MICRO BEVELS 



LIGHT GREY VARNISHED OAK

UE1304



WORN LIGHT OAK

UE1303



WHITE OAK LIGHT

UE1491



OLD WHITE OAK NATURAL

UE1493



WHITE OAK MEDIUM

UE1492



OLD WHITE OAK DARK

UE1496



UE1304



OLD OAK LIGHT GREY

UE1406



OLD OAK GREY

UE1388

Classic

SIZE

120 x 19 cm x 8 mm



Water-resistant Classic floors offer a balanced combination of colours and styles, blended with a natural look and feel.

0 BEVELS



RECLAIMED WHITE PATINA
OAK

CL1653



VICTORIA OAK

CLM3185



ENHANCED BEECH 3 STRIP

CL1016



ENHANCED OAK NATURAL
VARNISHED 3 STRIP

CL998



ENHANCED MERBAU 3 STRIP

CL1039

4 IMPRESSION BEVELS —



BLEACHED WHITE TEAK

CLM1290



BLEACHED WHITE OAK

CLM1291



OLD OAK LIGHT GREY

CLM1405



HAVANNA OAK NATURAL

CLM1655



MIDNIGHT OAK NATURAL

CLM1487



WINDSOR OAK

CLM3184



MOONLIGHT OAK NATURAL

CLM1659



NATURAL VARNISHED OAK

CLM1292



OLD OAK NATURAL

CLM1381



MIDNIGHT OAK BROWN

CLM1488



OLD OAK GREY

CLM1382

Creo

SIZE

120 x 19 cm x 7 mm

The 7 mm standard-sized and bevel-less planks provide a streamlined appearance.

0 BEVELS



CHARLOTTE OAK WHITE

CR3178



CHARLOTTE OAK BROWN

CR3177



VIRGINIA OAK NATURAL

CR3182



TENNESSEE OAK GREY

CR3181



TENNESSEE OAK LIGHT WOOD

CR3179



TENNESSEE OAK NATURAL

CR3180



CR3177



LOUISIANA OAK NATURAL

CR3176



VIRGINIA OAK BROWN

CR3183

NEW Impressive Patterns

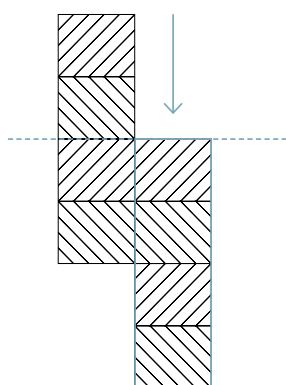
SIZE

120 x 39.6 cm x 8 mm



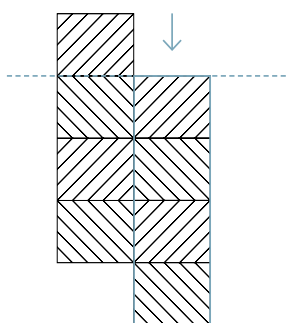
Give free rein to your imagination with these water-resistant patterns.

1 FLOOR
2 INSTALLATION PATTERNS



**PATTERN 1 - OPTION A:
CHEVRON PATTERN**

Shift 50% of the plank



**PATTERN 1 - OPTION B:
DIAMOND PATTERN**

Shift 25% of the plank



IPA4160

PATTERN 2

4 GENUINE BEVELS



ROYAL OAK NATURAL

IPA4142



ROYAL OAK DARK BROWN

IPA4145



IPA4145

PATTERN 1

2 GENUINE BEVELS



CHEVRON OAK MEDIUM

IPA4160



CHEVRON OAK TAUPE

IPA4164



CHEVRON OAK NATURAL

IPA4161



CHEVRON OAK BROWN

IPA4162

Arte

SIZE

62.4 x 62.4 cm x 9.5 mm

Large laminate tiles with subtle V-grooves. Combine the durability of an original tile floor with the practical benefits of laminate.

4 MICRO BEVELS



MARBLE CARRARA

UF1400



LEATHER TILE LIGHT

UF1401



LEATHER TILE DARK

UF1402



**POLISHED CONCRETE
NATURAL**

UF1246





POLISHED CONCRETE DARK

UF1247



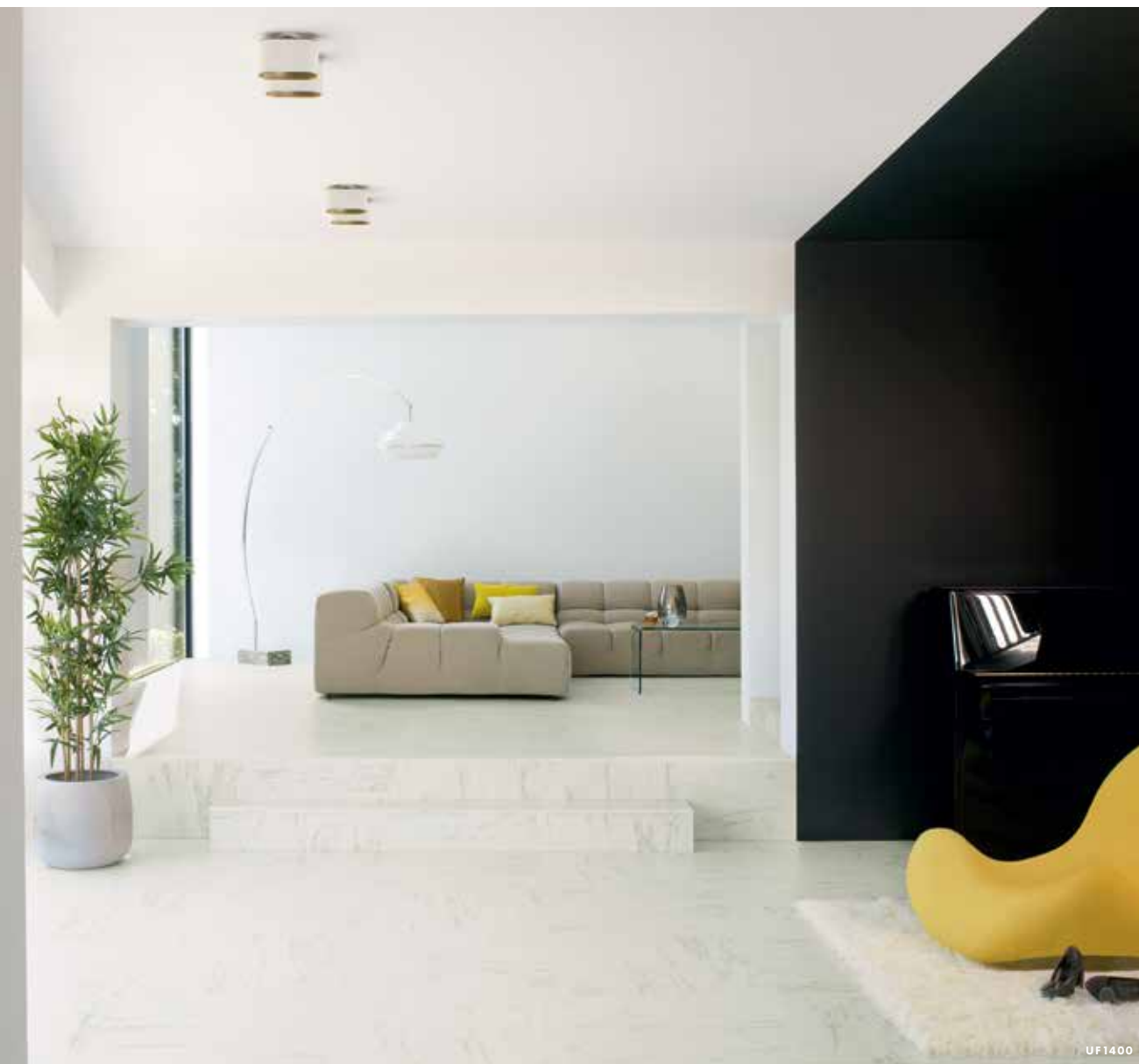
VERSAILLES WHITE OILED

UF1248



VERSAILLES LIGHT

UF1155



UF1400

Exquisa

SIZE

122.4 x 40.8 cm x 8 mm

An innovative floor with a tactile surface structure. The boards can consist of different tiles.

4 MICRO BEVELS



TIVOLI TRAVERTINE

EXQ1556



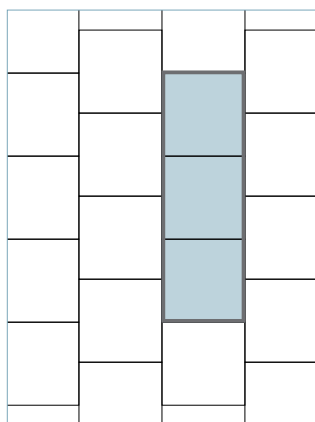
SLATE DARK

EXQ1552



SLATE BLACK

EXQ1550



SIZE

1 plank: 122.4 x 40.8 cm x 8 mm

1 tile: 40.8 x 40.8 cm x 8 mm

4 MICRO BEVELS



CRAFTED TEXTILE

EXQ1557

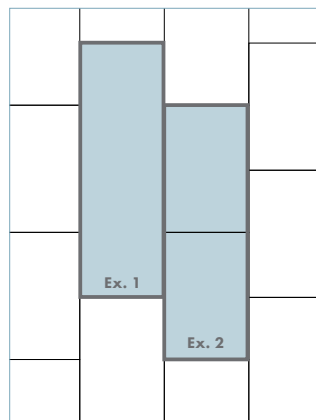
Example 1



SLATE BLACK GALAXY

EXQ1551

Example 2



SIZE

Ex.1: 1 plank = 1tile: 122.4 x 40.8 cm x 8 mm

Ex.2: 1 plank = 2 tiles: 61.2 x 40.8 cm x 8 mm

4 GENUINE BEVELS



CERAMIC WHITE

EXQ1553



CERAMIC LIGHT

EXQ1554

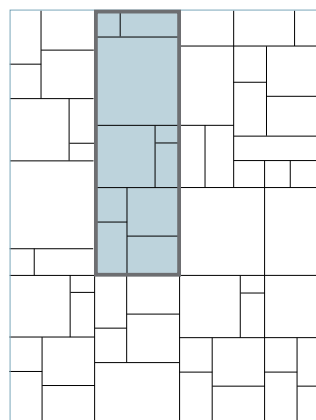


CERAMIC DARK

EXQ1555



EXQ1553



SIZE

1 plank: 122.4 x 40.8 cm x 8 mm

1 tile: multipattern



INSTALLATION HAS NEVER
BEEN THIS EASY



Install your floor without hassle

Do you want to install the floor yourself, or would you rather leave it to an expert? Anything is possible at Quick-Step.



Quick-Step® Master Installer: perfection without worry

Opt for professional installation by an accredited Quick-Step Master Installer. These Master Installers are trained at the Quick-Step Academy, the most exclusive training centre in the flooring industry.

WHY CHOOSE A QUICK-STEP® MASTER INSTALLER?

- Get the best end result with expert underlay selection and subfloor preparation.
- Make your floor stand out with advice on the correct installation direction.
- Enjoy a perfect finish, down to the last detail: skirtings, profiles and staircases are meticulously placed.
- Expert quality at the right price.
- Inside knowledge on the latest features.
- A lifetime warranty* on the installation.

* The duration of the lifetime warranty is equal to the duration of the product warranty. More info: www.quick-step.com



Do it yourself

When you've found your dream floor, you want it installed as quickly and smoothly as possible. The Quick-Step Uniclic® and Uniclic® Multifit click systems ensure a worry-free installation, even in tight corners and under radiators. On top of that, all Quick-Step Laminate floors can be installed over traditional underfloor heating.

You can find everything you need to install your floor at Quick-Step, including tools, glue and accessories.

Need some guidance? Check out our installation tips and videos at www.quick-step.com



A person is kneeling on a floor covered with a white protective paper. The person is wearing a grey long-sleeved shirt, dark blue jeans, and dark sneakers with white laces. Their right hand is resting flat on the paper. The background is a light-colored brick wall. The text "EVERYTHING YOU NEED FOR A PERFECT FLOORING EXPERIENCE" is centered in the middle of the image.

EVERYTHING YOU NEED
FOR A PERFECT FLOORING EXPERIENCE

Easy installation

The perfect underlay

Choosing the right underlay is essential for the final look, quality and comfort of your new laminate floor.

Moreover, Quick-Step's easy-to-install underlays are compatible with floor heating and provide:

- excellent acoustic and thermal insulation;
- a stable base for the Uniclic® and Uniclic® Multifit systems;
- protection from rising damp.

Find out which one of our five underlays is the best choice for your project.

Quick-Step® underlays



SILENT WALK

Thickness: 2 mm

Roll: 7 m²

The ideal underlay for rooms with heavy traffic (living room, hallway, etc.). Offers optimal noise reduction and the best efficiency with floor heating.



UNISOUND

Thickness: 2 mm

Roll: 15 m²

Great all-round underlay for rooms with frequent traffic (living room, hallway, kitchen, etc.).



BASIC PLUS

Thickness: 2 mm

Roll: 15 m²/60 m²

Good all-round underlay for rooms with less traffic (attic, home office, etc.).



TRANSITSOUND

Thickness: 2 mm

Roll: 15 m²

Ideal noise-reducing underlay for upper floor rooms and apartments.



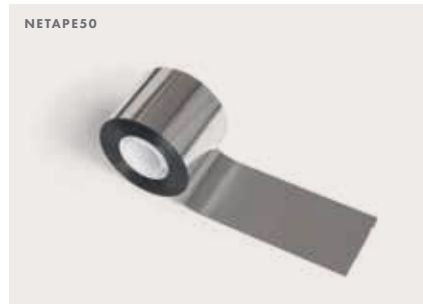
THERMOLEVEL

Thickness: 5 mm

Box: 9 m²

Ideal for irregular subfloors. Provides additional insulation. Not compatible with floor heating.

Installation tools



ADHESIVE TAPE

Roll: 50 m

Attach your underlay for a moisture-proof underlay installation.



INSTALLATION SET

Tapping block: to easily click planks together.

Cramp iron: to click planks together in hard-to-reach

places. **Spacers:** to provide an expansion joint (8 to 10 mm) between walls and floor.

**INSTALLING THE RIGHT UNDERLAY
HAS A MAJOR IMPACT ON
THE FINAL LOOK, QUALITY AND
ACOUSTICS OF YOUR FLOOR.**

Finish in style

Why choose Quick•Step® skirtings and profiles?

PERFECTLY MATCHING COLOURS

Our skirtings and profiles perfectly match the colour of every floor.

SCRATCH-RESISTANT TOP LAYER

Quick-Step skirtings and profiles are scratch-resistant and protected against everyday wear and tear.

QUICK•STEP® WARRANTY

They come with the same warranty as the floors.

Skirtings



STANDARD SKIRTING

240 x 1.2 x 5.8 cm
Installation method: One4All Glue or Clips

Adjustable in height (4 or 5.8 cm). Use the included plugs (per 6 pieces of skirting) to connect skirtings, and also at the corners. Plugs are also available separately (NEPLUG).



LARGO SKIRTING

240 x 1.4 x 10 cm
Installation method: One4All Glue or Track

Includes space to hide cables.
Only for Largo floors.



PARQUET SKIRTING BOARD

240 x 1.4 x 7.7 cm
Installation method: One4All Glue or Track

Includes space to hide cables. Use plugs (NEPLUG) to connect skirtings, also along the corners. To be ordered separately.



SCOTIA

240 x 1.7 x 1.7 cm
Installation method: One4All Glue

Paintable skirtings

Paintable skirtings with Incizo® technology are easily cut to fit the desired height (thanks to the preapplied cuts). Once they are fitted, you can paint them or just leave white.



OVOLO PAINTABLE SKIRTING

240 x 1,6 x 16 cm
Installation method: One4All Glue

Can be used in two shapes for more decorative freedom.

Adjustable in height (use the Incizo® knife): 5 heights possible between 2.5 cm and 13.4 cm.



SHAPE 1



SHAPE 2



OGEE PAINTABLE SKIRTING

240 x 1,6 x 16 cm
Installation method: One4All Glue

Can be used in two shapes for more decorative freedom.

Adjustable in height (use the Incizo® knife): 4 heights possible between 2 cm and 14 cm.



SHAPE 1



SHAPE 2



COVER PAINTABLE SKIRTING

240 x 1,6 x 12,9 cm
Installation method: One4All Glue

Adjustable in height: 4 heights possible between 6.8 cm and 12.9 cm.



WATER-RESISTANT PAINTABLE SKIRTING

200 x 1,2 x 5,8 cm
Installation method: One4All Glue



PAINTABLE SKIRTING

240 x 1,4 x 4 cm
Installation method: One4All Glue

Also available in a flexible version (QSFLEXSKR) to finish your entire space in the same style.



FLEXIBLE PAINTABLE SKIRTING

1,4 x 4 cm
Installation method: Glue

Can be cut to the desired length.

Installation tools for skirtings



ONE4ALL GLUE

290 ml

One tube glues 15 m of skirtings.



NEPLUG

PLUGS

24 connections for inside and outside corners +
24 connections for straight stretches.

Only for standard and parquet skirtings.



NETRACK

TRACK

240 x 0.8 x 2.7 cm

Secure the track to the wall with screws or the One4All glue and click the skirtings in place.



QSClipSKME(-)

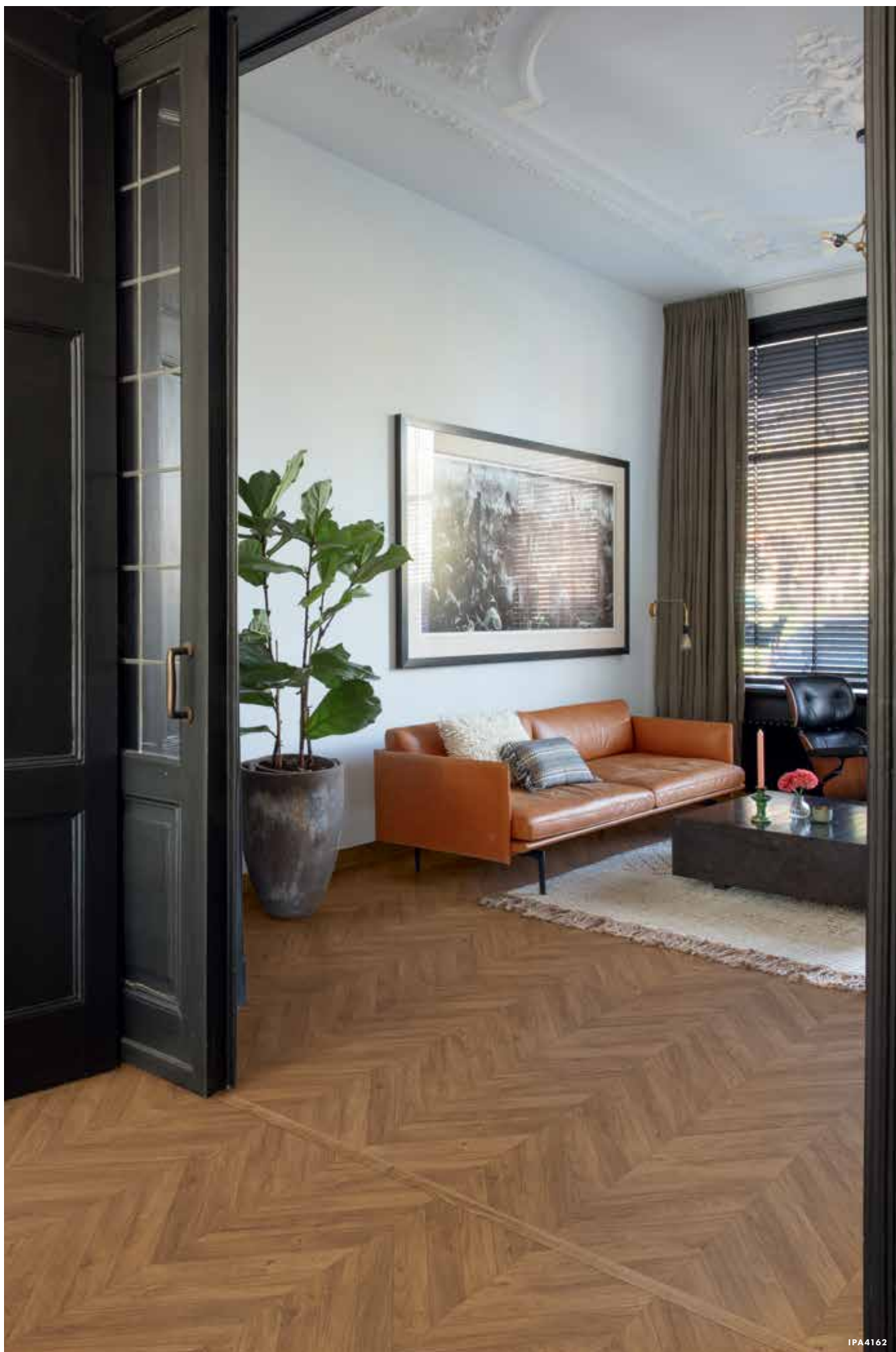
CLIPS

1 pack: 50 clips

Place one clip every 0.5 m along the wall and click the skirtings to the clips. Not compatible with 12 mm floors.

**MOISTURE-PROOF FINISHING TOOLS:
USE OUR HYDROKIT AND PE FOAM FOR A
100% WATER-RESISTANT FINISH.**

Discover more on p. 71



IPA4162

Finish your floor with our skirtings and Incizo® profile, available in perfectly matching colours.

Profiles

Incizo® profile: 1 profile, 5 applications

Quick-Step's Incizo® profile is a multifunctional finishing tool that can be used to finish your floor and stairs in matching colours. Simply cut the Incizo® basic profile to desired shape with the supplied Incizo® knife.

INCIZO® PROFILE

215 x 4.8 x 1.3 cm

Contents: 1 Incizo® profile, 1 Incizo® knife, 1 plastic rail.

APPLICATION 1

Connect two floors of different heights.



APPLICATION 2

Connect two floors of the same height.



APPLICATION 3

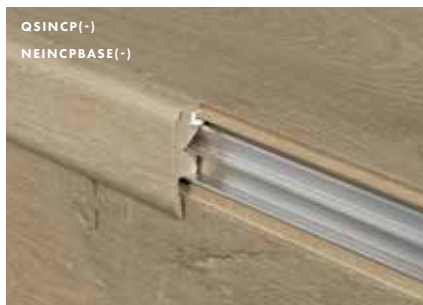
Finish your floor along walls or windows.

**APPLICATION 4**

Create a nice transition between your Laminate floor and other flooring types.

**APPLICATION 5**

The Incizo® profile also allows you to finish your stairs in the flooring design of your choice. For this application you need the Incizo® profile and an aluminium sub-profile.



INCIZO® ALUMINIUM SUB-PROFILE FOR STAIRS

215 x 7.1 x 2.0 cm



Metal profiles



METAL INCIZO® PROFILE

270 x 4,74 x 1,14 cm

Contents: 1 Incizo® profile, 1 handle, 1 plastic rail.
Silver profile also available in size 93 cm x 4,74 cm x 1,14 cm. Not compatible with 12 mm floors.



MULTIFUNCTIONAL PROFILE

186 x 4,7 x 1 cm

To bridge height differences up to 12.3 mm.

Finishing tools



KIT

310 ml

Fill up the space between skirtings and floor. Available in matching colours.

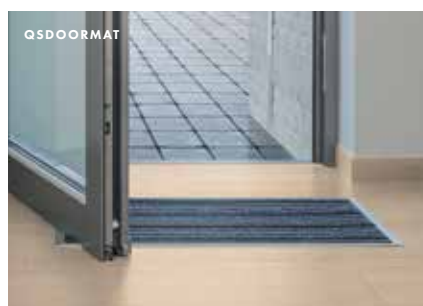
Average usage: 1 tube per 30 m² room.



PIPE COVERS

2 pcs/pack

Properly finish pipes and heating elements. Available in inside diameter size 15 mm and 22 mm.



DOORMAT

Frame: 79 x 47,8 cm

Doormat: 74,6 x 43,4 x 0,9 cm

An elegant way to prevent dust and dirt from entering.

Tools for a completely water-resistant finish



Use our Hydrokit and PE foam for a 100% water-resistant finish and get an additional 10-year warranty on residential installation in damp spaces. Compatible with Signature, Majestic, Impressive (Ultra), Eligna, Classic and Impressive Patterns.



EL3579

QSKITRANSP



HYDROKIT

310 ml

Transparent silicone for an invisible and water-resistant skirting and profile finish.

Average use: 15m/tube.

NEFOAMSTRIP20



PE FOAM

20 times 1 m x 10 mm

Fill up expansion joints with this waterproof solution for skirtings and profiles.

To be used in combination with the Hydrokit.

Worry-free maintenance

EASY MAINTENANCE FOR MAXIMUM VALUE

Quick-Step cleaning products are specifically developed for our floors. They cleanse the surface thoroughly and safeguard its original appearance to maximise that 'new floor' experience.

For detailed maintenance instructions, visit www.quick-step.com

Maintenance



QSCLEANING2500

CLEANING PRODUCT 2.5 L

Average usage: 37 cleaning sessions.



QSCLEANING1000

CLEANING PRODUCT 1 L

Average usage: 15 cleaning sessions.



QSSPRAYKIT

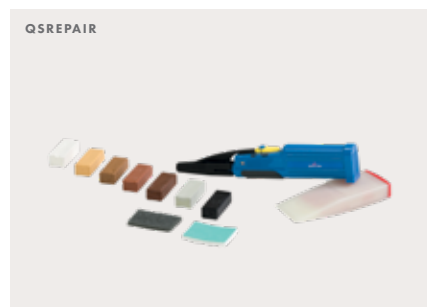
CLEANING KIT

Mop holder with water tank and handy lever to easily moisten and mop your floor. Also includes a cleanable microfibre mop and one-litre of Quick-Step cleaning product.



QSSPRAYMOP

CLEANABLE MICROFIBRE MOP



QSPREPAIR

REPAIR KIT

Easily repair light damage in the original colour. It assures that your floor is protected again.

Find detailed instructions at www.quick-step.com



Setting the stage for sustainability

Everyday, UNILIN – the company behind Quick-Step – pushes the boundaries of what it means to be a flooring brand. Apart from making our floors as beautiful and enduring as possible, we also strive to make them as sustainable as possible, and to minimise our ecological impact in every way we can. Just like you, we are convinced that a world of beauty is a world where we respect and treasure our natural resources.

“Sustainability has become indispensable for doing business.
That’s why we strive to make our floors as sustainable as possible.”

TINO MULLE, CHIEF SUSTAINABILITY OFFICER AT UNILIN

This means we’re not just mindful of how we source our raw materials, but also how we provide energy for production. In many UNILIN factories, end-of-life wood waste is the primary energy source.

NO TREES WERE HARMED IN THIS PRODUCTION PROCESS

Did you know our laminate floors are entirely made from residues of the forestry and wood industry? By using leftover materials to create a new product, we actively lower the amount of carbon dioxide that’s released into the atmosphere. In fact, no tree is felled to create your new dream floor.

All our Laminate floors are also Ecolabel stamped. This means they adhere to the most stringent EU rules for indoor air quality, raw materials quality and sourcing, and workers health & safety.



THE CREDENTIALS OF OUR FLOORING

To provide you with maximum value, Quick-Step Laminate floors adhere to the most stringent quality and sustainability labels.



EU ECOLABEL

A label of environmental excellence awarded to products and services meeting high environmental standards throughout their lifecycle: from raw material extraction to production, distribution, use in your home and disposal at end-of-life.



PEFC

An internationally recognised label that ensures that the wood we use in our flooring comes from sustainable managed forests.

Your Quick•Step® point of sale



Quick•Step® is a quality product produced by UNILIN bvba – division Flooring, Ooigemstraat 3, B-8710 Wielsbeke, Belgium, Europe. Product images may differ from actual product. The availability of products, or the products themselves, may change at any time without notice. Content © 2019-2020 by UNILIN bvba – division Flooring. All rights reserved. The contents of this brochure may not be reproduced in whole or in part without prior written permission from the publisher. 019 102 01 - Z2 - EN.
Coverphoto: SIG4754

FOLLOW US ON

 www.facebook.com/QuickStepFloors

 www.youtube.com/quickstepfloor

 www.pinterest.com/quickstepfloor

 [@QuickStepFloor](https://twitter.com/QuickStepFloor)

www.quick-step.com